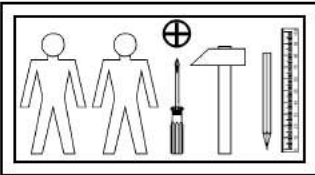
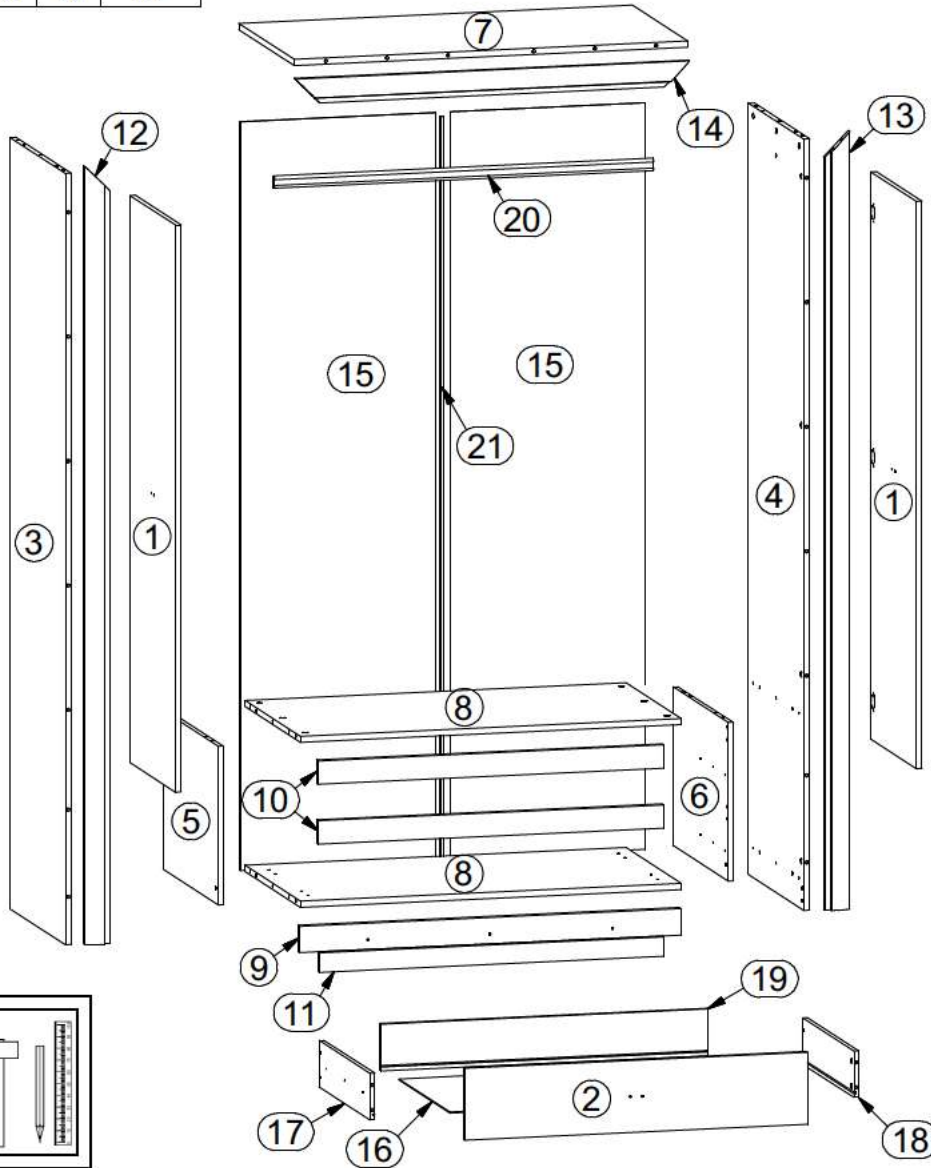
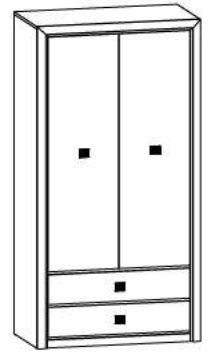


# KOEH II

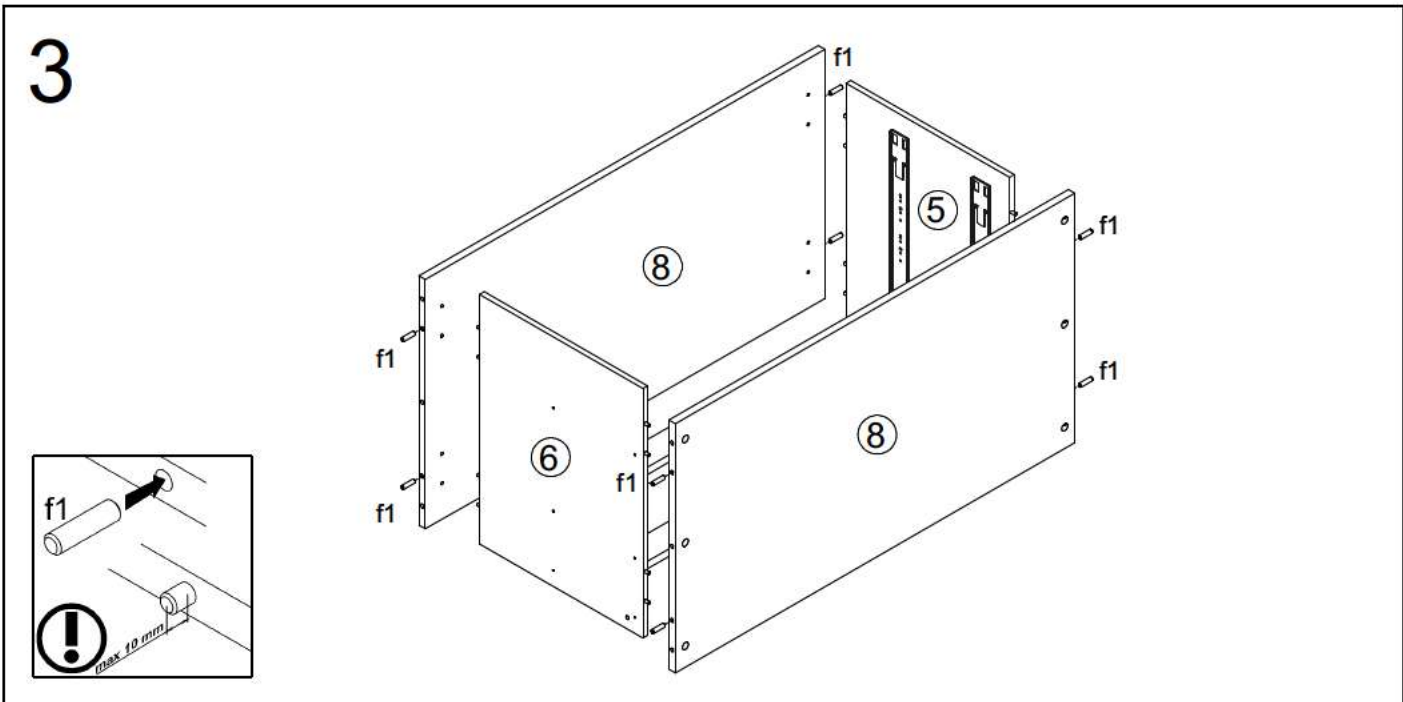
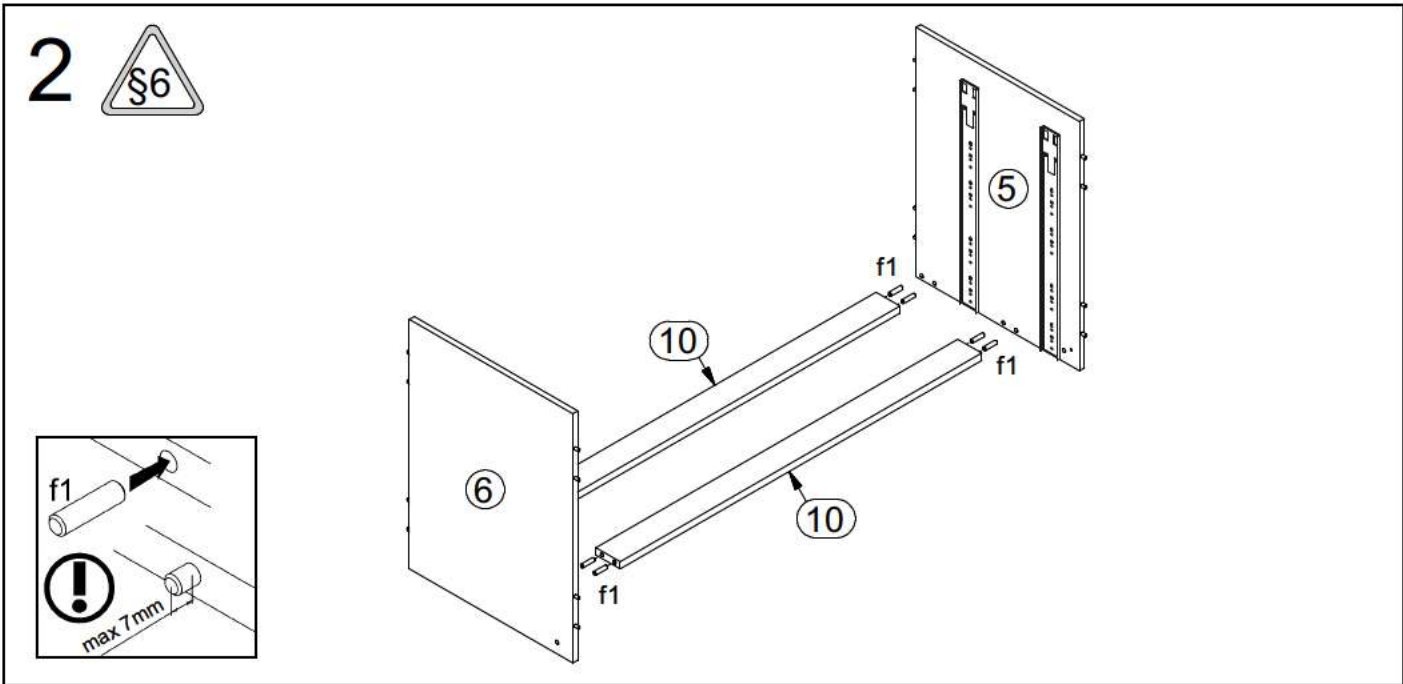
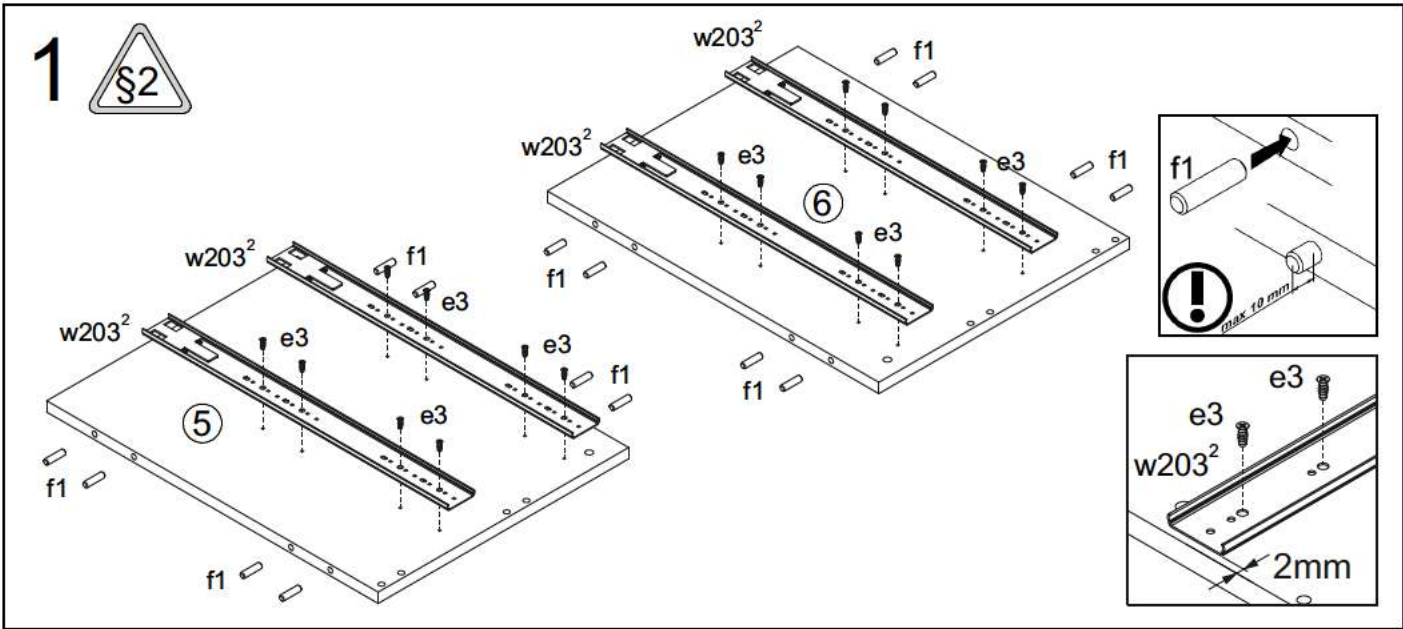
SZF2D2S

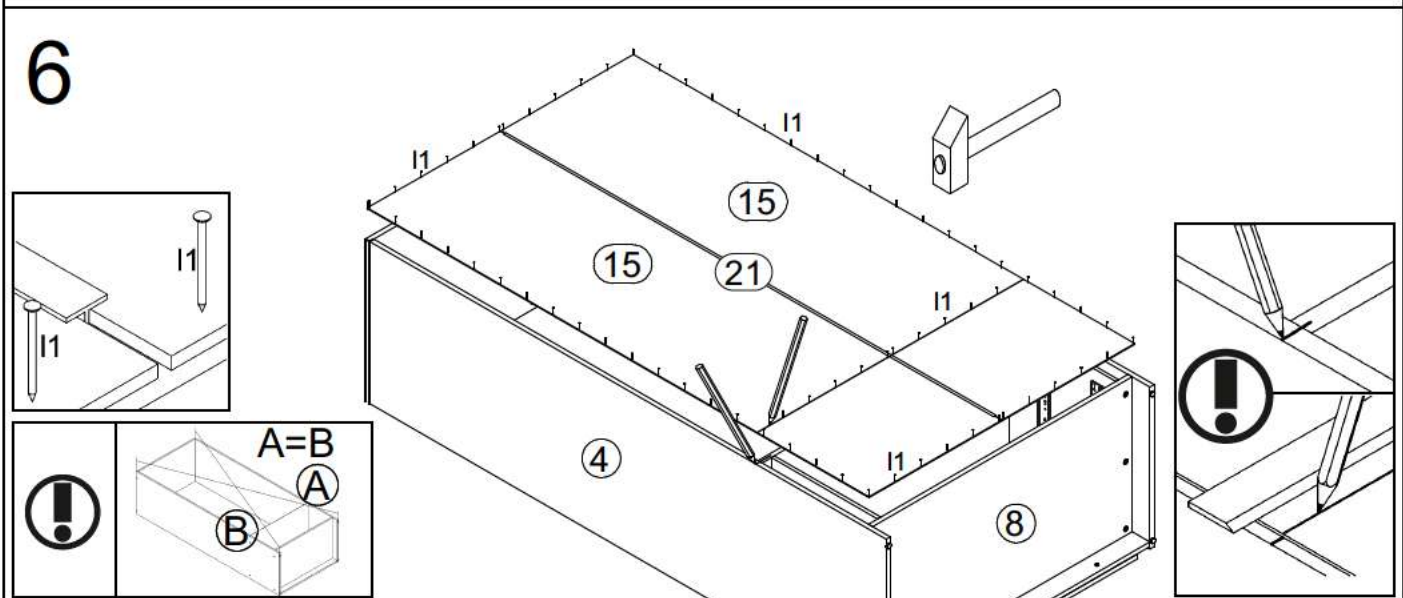
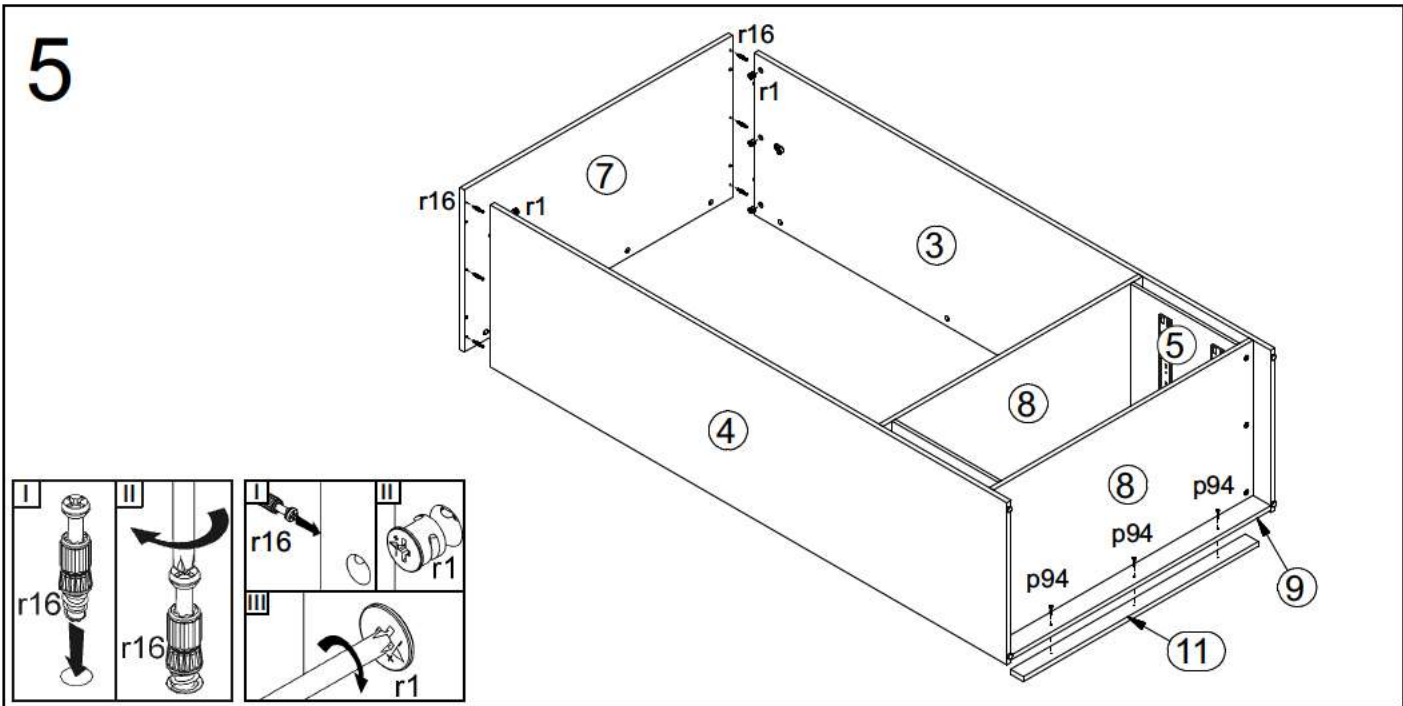
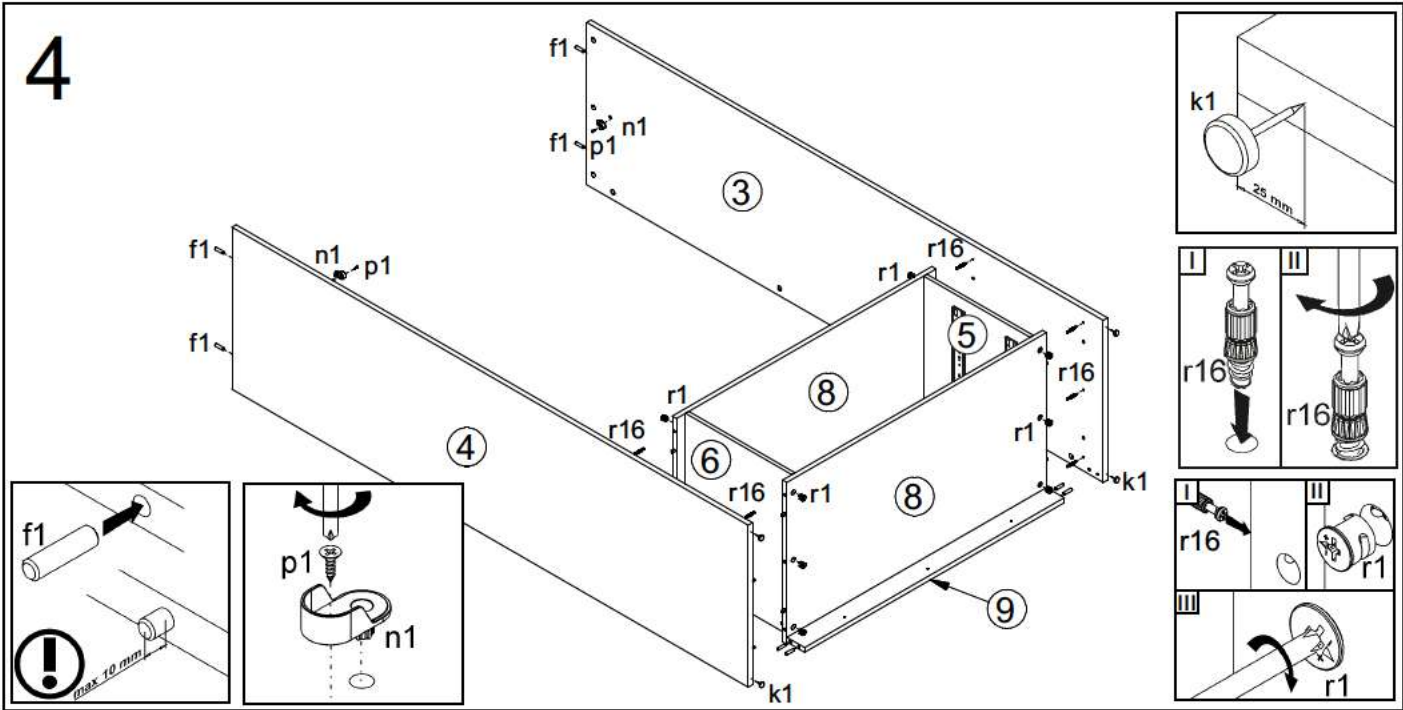
A	B	C	D	
1	S136 0001	1458	446	4/5
2	S136 0043	896	185	5/5
3	S136 101	1983	540	1/5
4	S136 102	1983	540	1/5
5	S136 1101	408	540	2/5
6	S136 1102	408	540	2/5
7	S136 201	1030	540	2/5
8	S136 352	997	540	2/5
9	S136 401	997	68	2/5
10	S136 402	903	60	2/5
11	S136 403	901	50	2/5

A	B	C	D	
12	S136 571	2000	65	3/5
13	S136 572	2000	65	3/5
14	S136 573	1031	65	3/5
15	S136 901	1925	512	1/5
16	S136 934	860	498	2/5
17	S136 5509	500	120	2/5
18	S136 5510	500	120	2/5
19	S136 5571	845	120	2/5
20	dr 992	992	30	2/5
21	lh 1898	1898	14	1/5



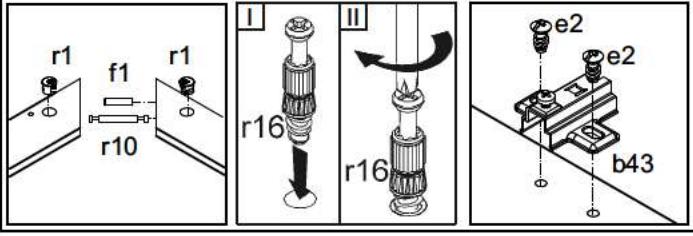
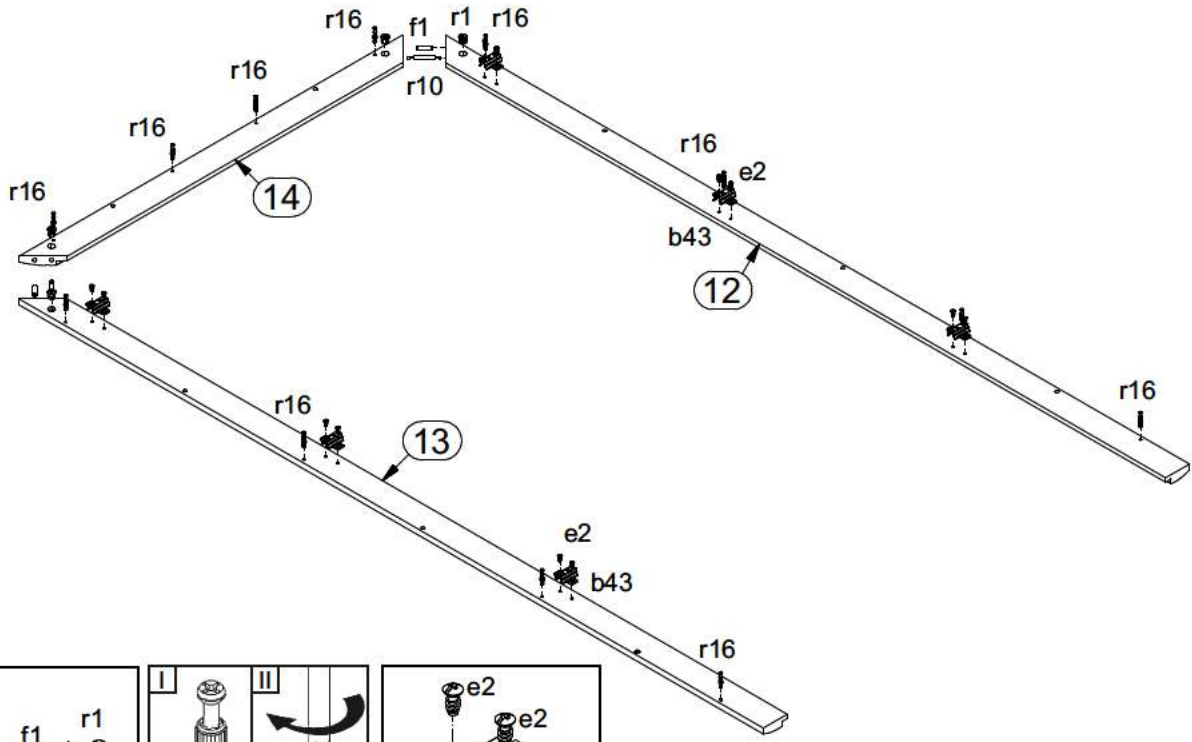
6x  a99	6x  b43	4x  c317	12x  e2 φ6,3x13 mm	16x  e3 φ6x13 mm	8x  e32 φ5x50 mm	50x  f1 φ8x30 mm	
8x  j30 M4x22 mm	4x  k1	70x  l1	2x  n1	1x  n26\1	2x  p1 φ3,5x13 mm	4x  p25 φ3,5x16 mm	
1x  p38 φ3,5x16 mm	12x  p51 φ3,5x15 mm	3x  p94 φ4x28 mm	42x  r1 φ1,5x12mm #16	2x  r10	38x  r16 20/9	20x  s2 ø16	
2x  t17 483 mm	4x  w203 <sup>1</sup> 500 mm	4x  w203 <sup>2</sup> 500 mm	16x  p140 φ3,5x12 mm				



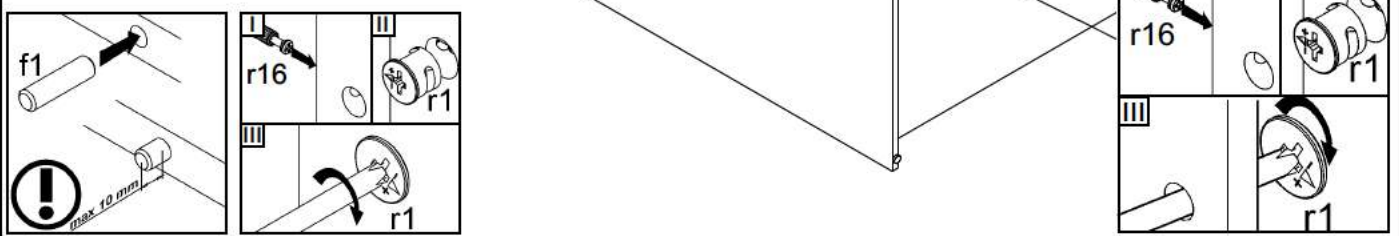
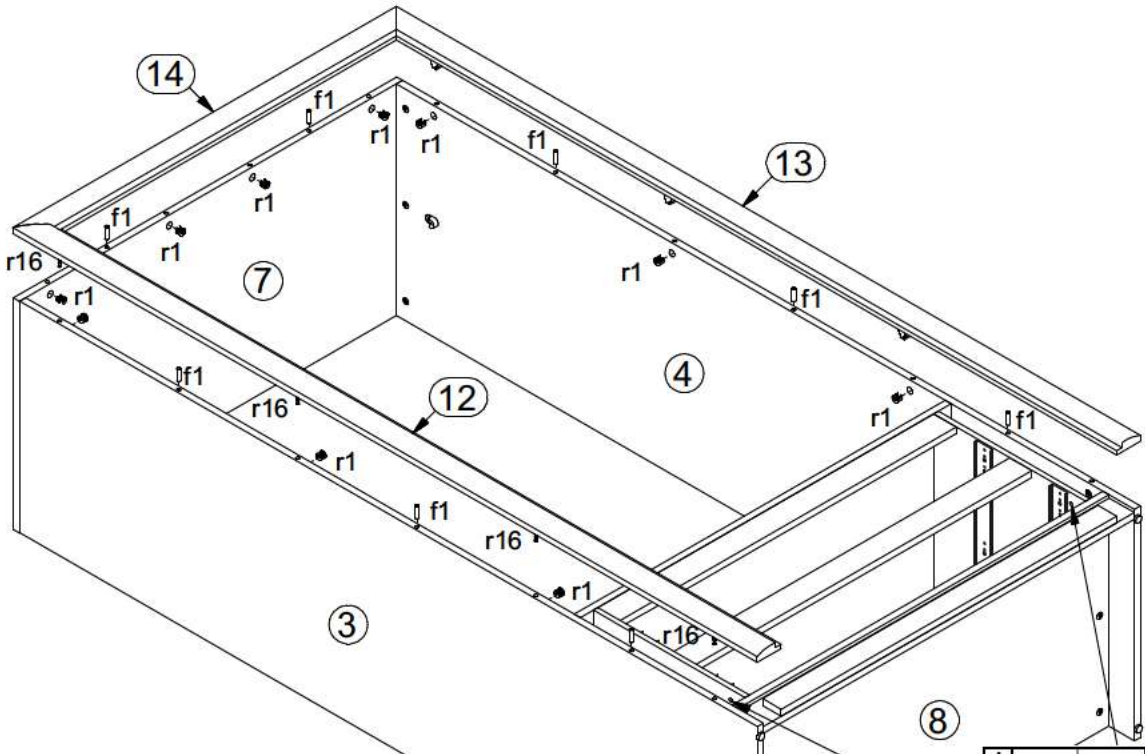




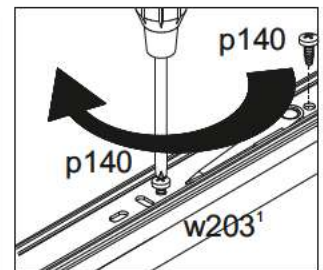
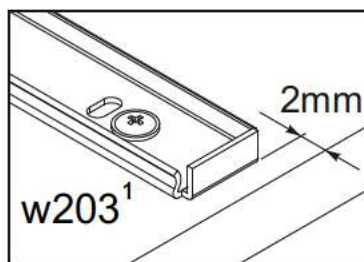
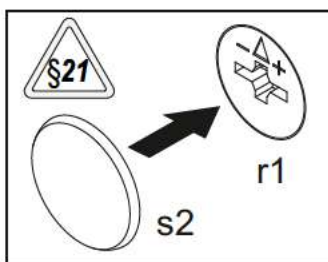
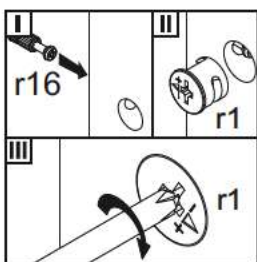
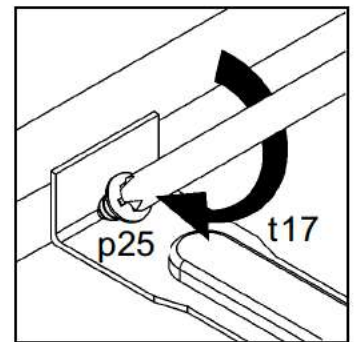
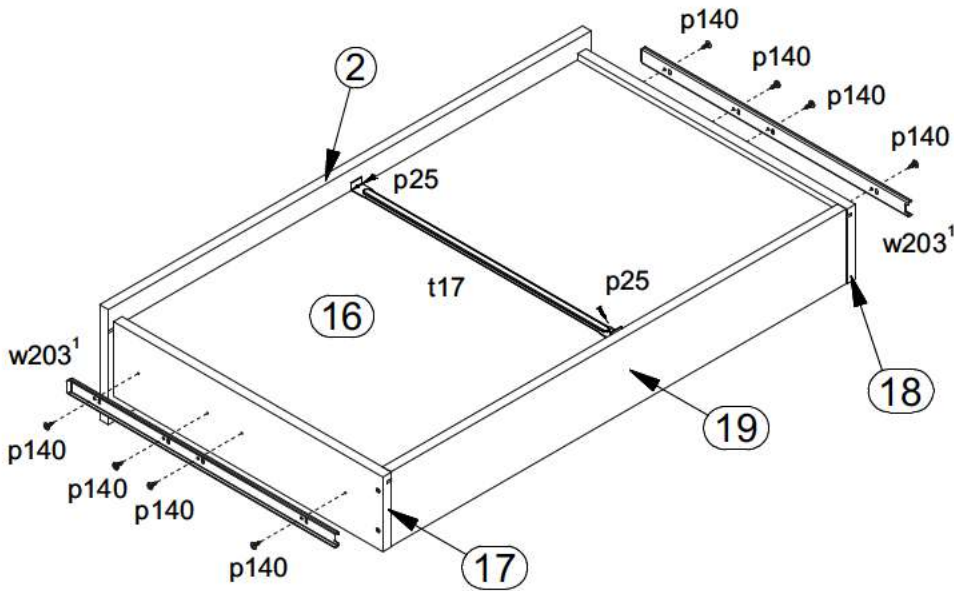
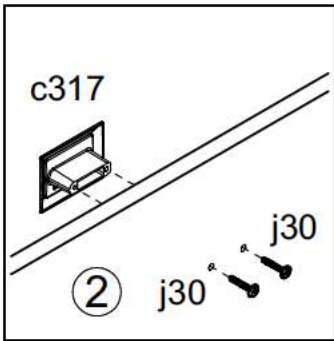
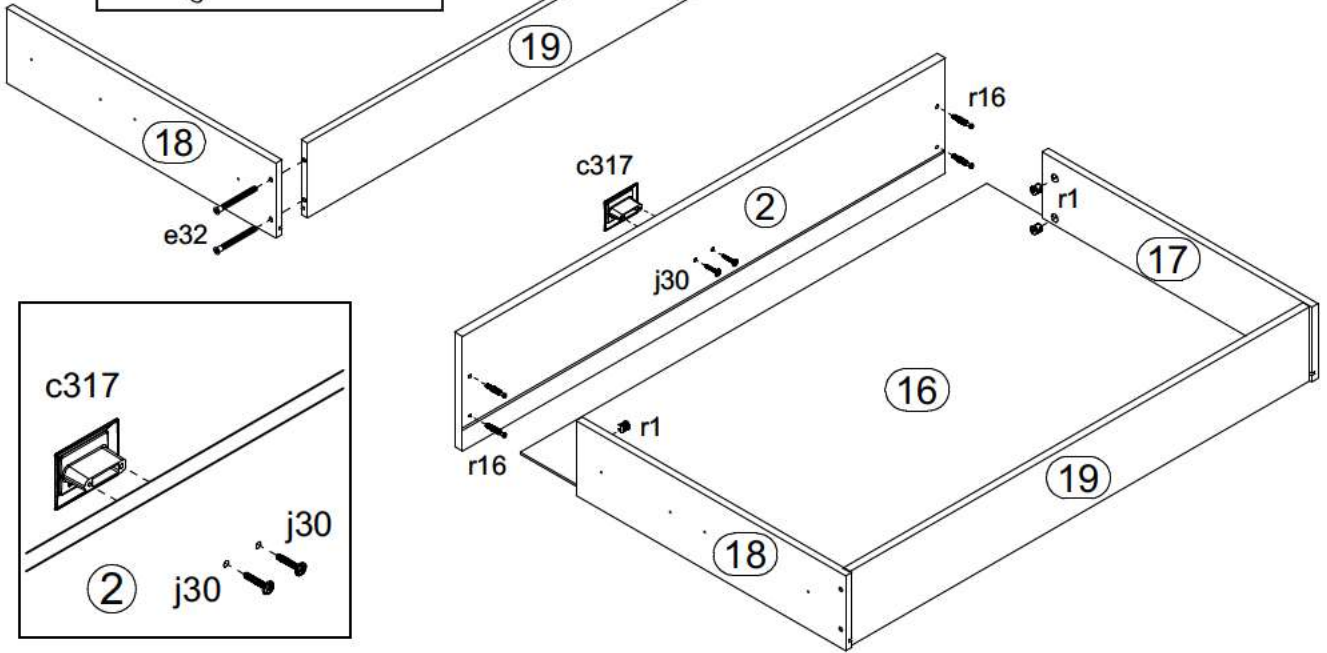
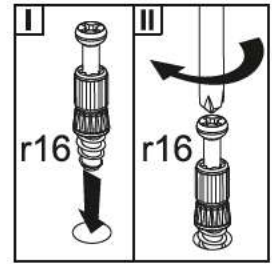
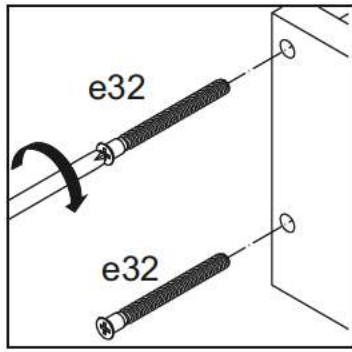
# 7



# 8



9



# 10

